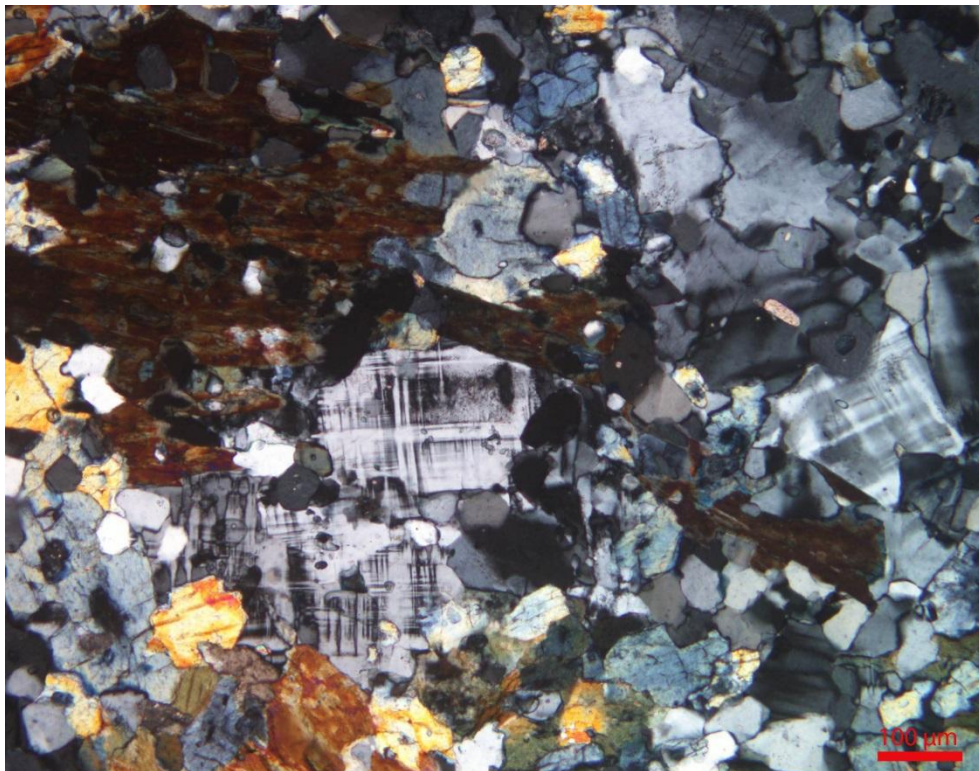


**Pmg – 1:** Photomicrograph showing association and parallel alignment of quartz, muscovite, garnet and biotite in garnetiferous quartz-muscovite-biotite schist as seen under plane polarized light.

**Specimen No. : MP-KJ/P/2**

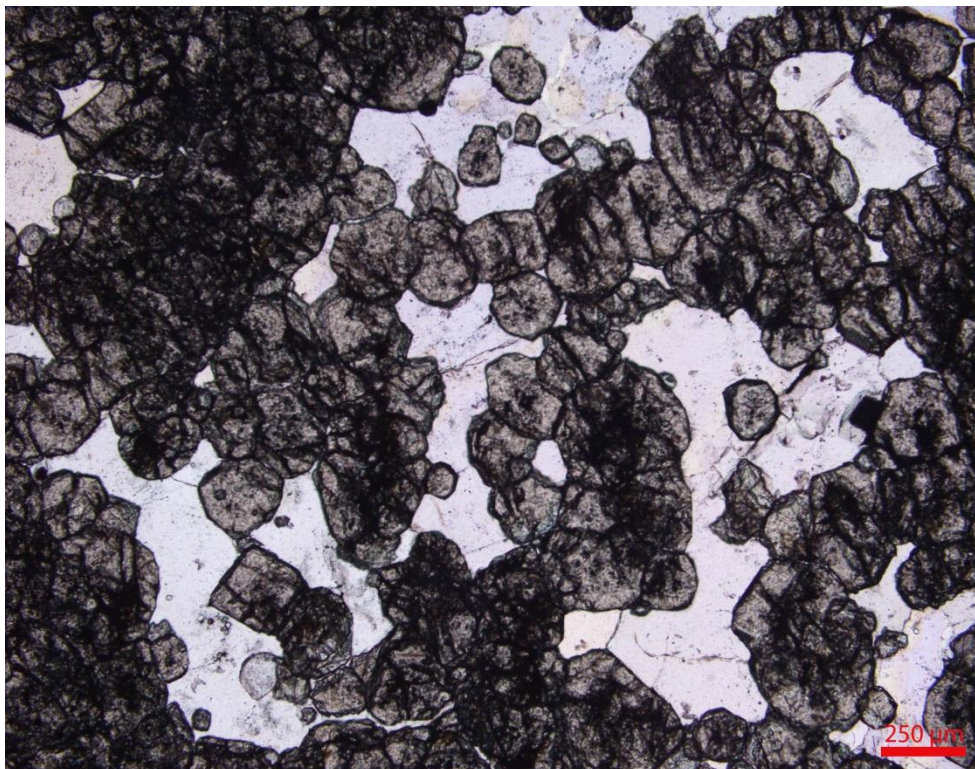
**Magnification : 40X**



**Pmg – 2:** Photomicrograph showing association of microcline, quartz, hornblende and epidote/ zoisite in hornblende rich granite gneiss as seen under crossed nicols.

**Specimen No. : MP-KJ/P/23**

**Magnification : 100X**



**Pmg – 3:** Photomicrograph showing association of garnet and quartz in garnet rich quartzite as seen under plane polarized light.

**Specimen No. : MKJP-04**

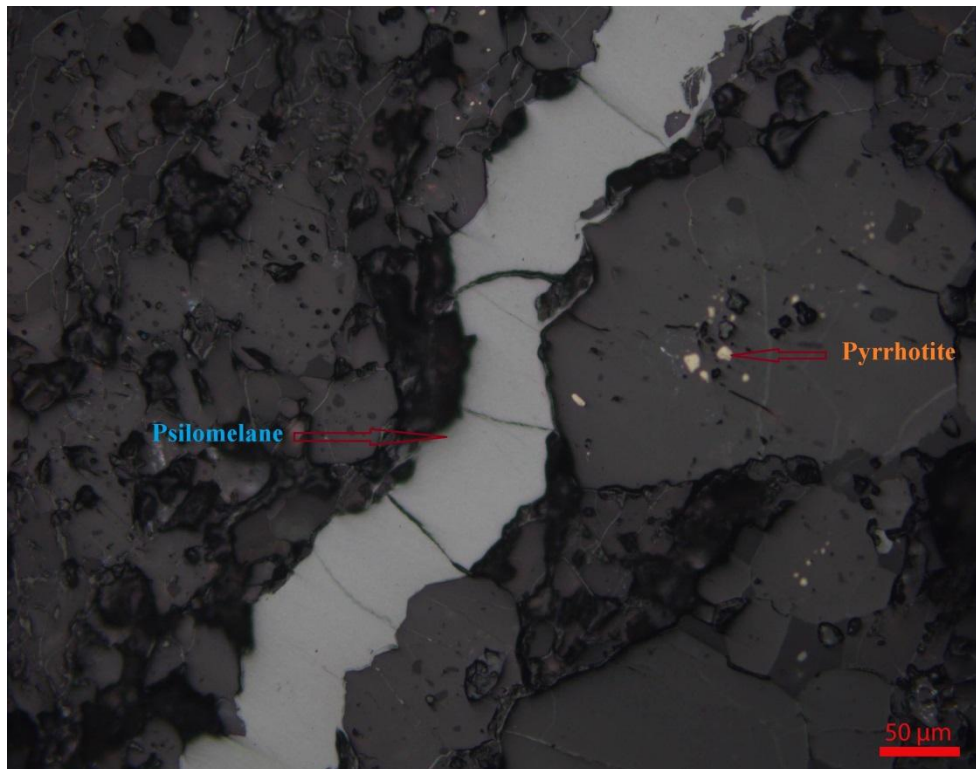
**Magnification : 40X**



**Pmg – 4:** Photomicrograph showing association and parallel alignment of microcline, quartz, plagioclase and biotite in granite gneiss as seen under crossed nicols.

**Specimen No. : MKJP-06**

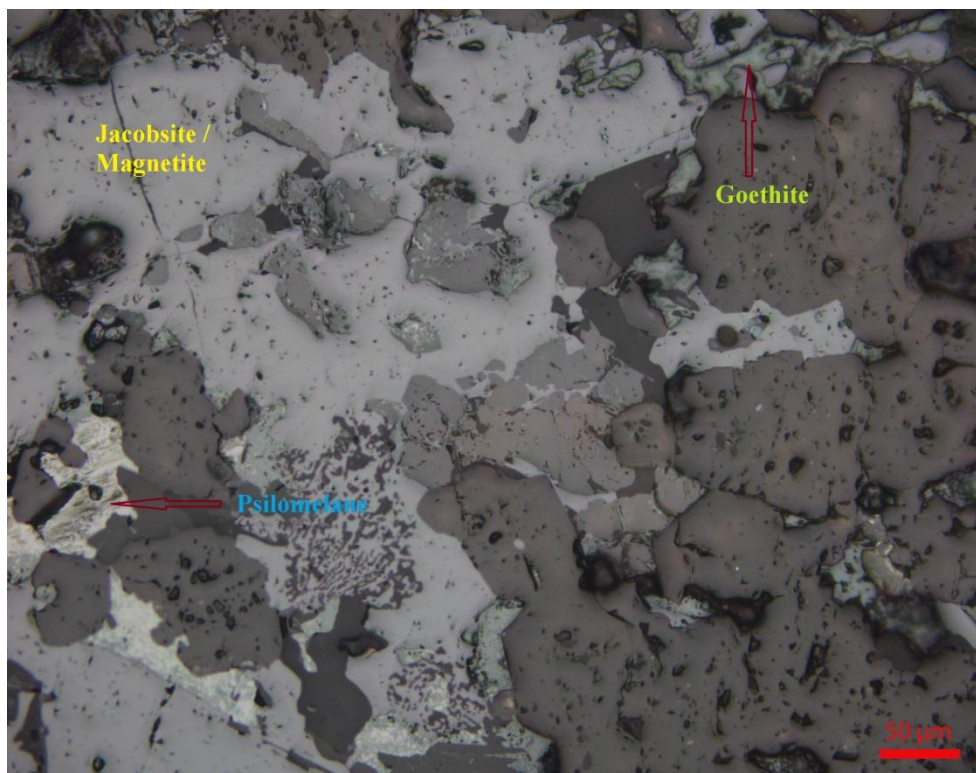
**Magnification : 40X**



**Pmg – 5:** Photomicrograph showing psilomelane filling and pyrrhotite specks as seen under reflected light.

**Specimen No. : MP-KJ/M/2**

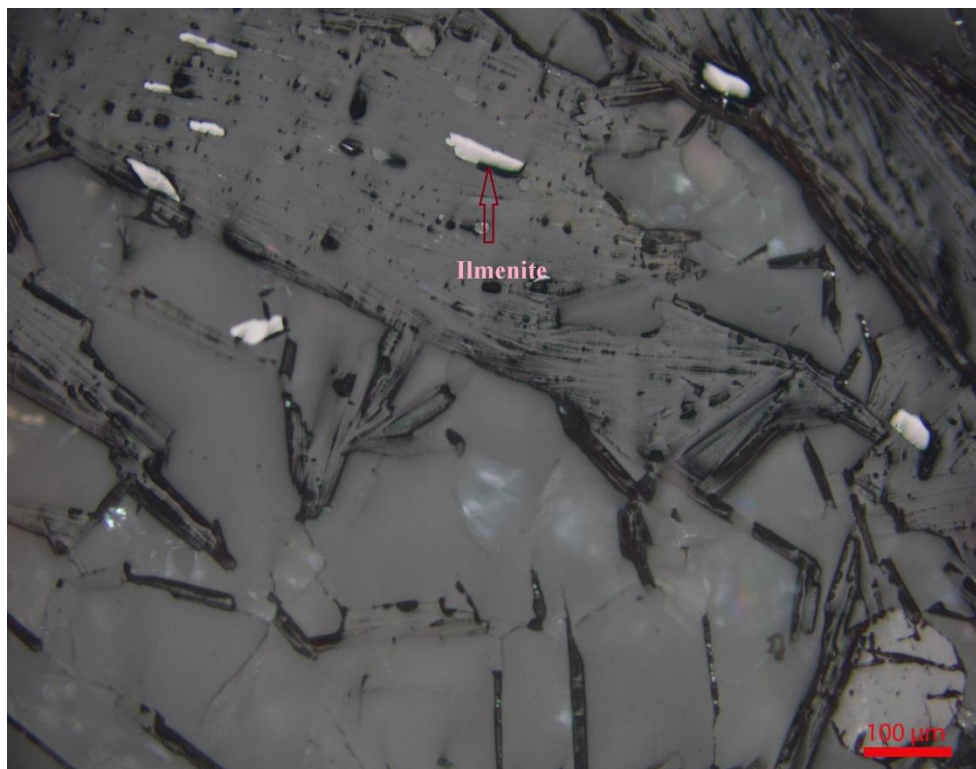
**Magnification : 200X**



**Pmg – 6:** Photomicrograph showing jacobite/ magnetite patches being cut across by psilomelane and goethite fillings as seen under reflected light.

**Specimen No. : MKJM-01**

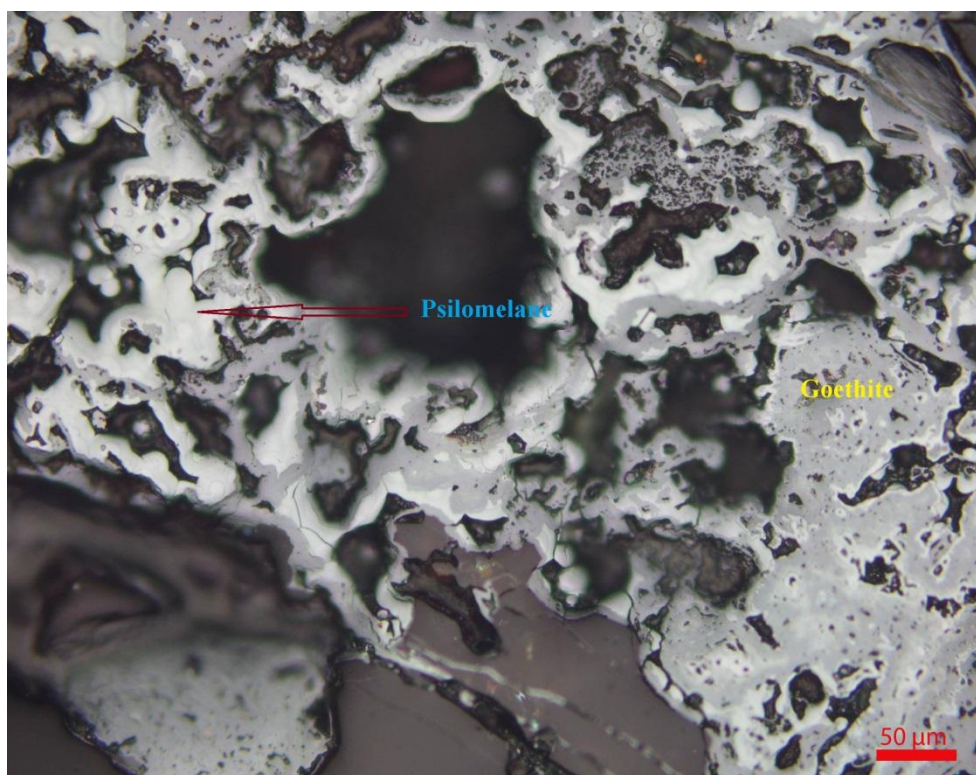
**Magnification : 200X**



**Pmg – 7:** Photomicrograph showing very fine bladed ilmenite grains aligned along the foliation as seen under reflected light.

**Specimen No. : MKJM-03**

**Magnification : 100X**



**Pmg – 8:** Photomicrograph showing psilomelane-goethite intermixed patches and fillings with colloform texture as seen under reflected light.

**Specimen No. : MKJM-04**

**Magnification : 200X**